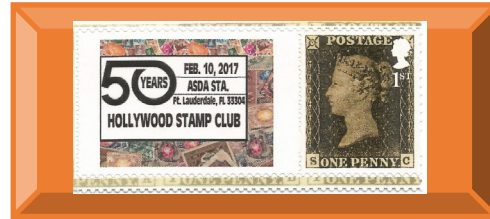


HOLLYWOOD STAMP CLUB
**HOLLYWOOD
PHILATELIST**



**HSC
DIGITAL
EDITION 2
MAY 6, 2020**



**SETARO,
HSC
Editor**

Celebrating the 180th Anniversary of the PENNY BLACK

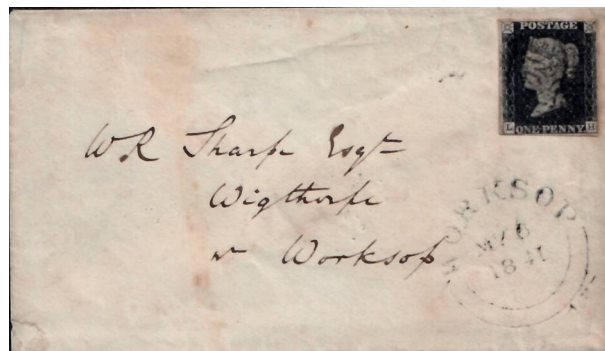
The Penny Black was the world's first adhesive postage stamp used in a public postal system. It was first issued in the United Kingdom



(referred to in philatelic circles as Great Britain), on 1 May 1840, but was not valid for use until 6 May. The stamp features a profile of Queen Victoria.

Although the stamps were not officially issued for sale until 6 May 1840, some offices such as those in Bath sold the stamps unofficially before that date. There are covers postmarked 2 May, and a single example is known on cover dated 1 May 1840. All London post offices received official supplies of the new stamps but other offices throughout

the United Kingdom did not, continuing to accept payments for postage in cash for a period. Shown is a May 6, 1840 cover.



The total print run was 286,700 sheets, containing a total of 68,808,000 stamps. Many were saved, and in used condition they remain readily available to stamp collectors. The only known complete sheets of the Penny Black are owned by the British Postal Museum.

The Penny Black lasted less than a year. A red cancellation was hard to see on the black design and the red ink was easy to remove; both made it possible to re-use cancelled stamps. In February 1841, the Treas-

ury switched to the Penny Red and began using black ink for cancellations instead, which was more effective and harder to remove. However, people still reused stamps by combining the uncanceled parts of two stamps to form an unused whole, so in 1864 as a further safeguard the top corner stars on the Penny Red were replaced by the lower corner check letters in reverse order.

On May 6, 2020 would be the 180th Anniversary of the Great Britain's Penny Black. A special stamp sheet which Royal Mail is issuing on the 6th May to mark to the day the 180th anniversary of the first adhesive postage stamp, shown here.



Many countries in the world have been issuing stamps with a reproduction of the Penny Black.



There are also several Cafes and restaurants named after the Penny Black. Most of them are in Great Britain or other countries. One is in Rochester, MI, USA..



Page of British Passport



Restaurant in Rochester, MI, USA



180 YEARS AGO: THE FIRST STAMPS AND PREPAID ENVELOPE REACHED SWITZERLAND!

[Corinphila Auction]



In the summer of 1840 Johann Heinrich Anton von Salis-Zizers (1805-1858) was probably very surprised when the postman at Zizers handed over the decorative envelope from Tandragee in Ireland to the Lord of the castle in Zizers. What was this unusual pictorial design on the letter? On closer inspection "His Excellency, Count John de Salis, au Chateau de Zizers, pres de Coire, Canton des Grisons" was able to recognize the artistic representation of the British Empire by William Mulready. Mulready was one of the most popular artists in the United Kingdom in the early years of the 19th century. The central figure was Britannia, who

sent her winged messengers by post over land and sea to the British Empire in all directions. In the west to British farmers who had emigrated to America, and in the Far East to India. But why did such a letter come to Switzerland? Additionally, a blue stamp with the head of Queen Victoria was in the left corner. Numerous postmarks and indications of fees showed that the letter had reached its destination at the end of a long journey.

What Johann von Salis-Zizers probably did not suspect at that time was the importance that the letter would have for the history of communications and philately in Switzerland in 2020. **Today the letter is one of two known covers sent to Switzerland in 1840 with an example of the world's first stamp issued and the only surviving Mulready postal stationery envelope sent to Switzerland. A unique item!**

Corinphila Auction, Brian Moorhouse SOUTH & CENTRAL AMERICA , Argentina

1858: 5 c. red and 10 c. green, used exam-



ples on circa May 20, 1859 triple rate cover from Rosario to Tucuman, clear to large margins all round, the 5 c. imperceptibly touched at lower left, tied by oval framed "CORREO NACIONAL / FRANCA / DEL ROSARIO" handstamp in black. A rare and most attractive franking. Cert. Del Mazo (2010). Provenance: Investphila, Lugano, 10 June 2011, lot 10.

SOVIET UNION 1925 Lenin 5 R. and 10 R. Definitive imperforate blocks of 4, used. Michel 296-97 D X, Unusual in blocks of 4.

(DelCampe Auction)

