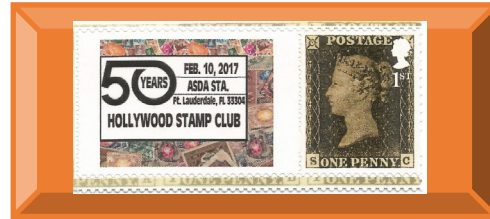


HOLLYWOOD STAMP CLUB
**HOLLYWOOD
PHILATELIST**



**HSC
DIGITAL
EDITION 6
JUNE 10, 2020**



**Enrique
SETARO,
HSC
Editor**

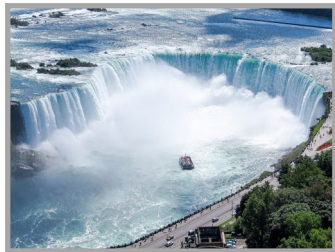
NIAGARA FALLS

Niagara Falls is a group of three waterfalls at the southern end of Niagara Gorge, spanning the border between the US

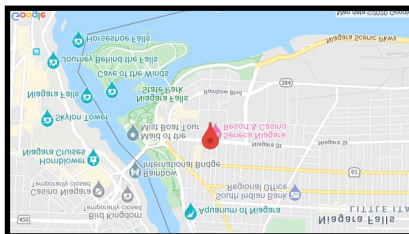


American Falls

state of New York and the Canadian province of Ontario. The largest of the three is Horseshoe Falls, also known as **Canadian Falls**, which straddles the international border-



Canadian Falls der between Canada and the United States. The smaller American Falls and Bridal Veil Falls lie entirely within the United States. Bridal Veil Falls are separated from Horseshoe Falls by Goat Island and from **American Falls** by Luna Is-



land, with both islands situated in New York as well.

Located on the Niagara River, which drains Lake Erie into Lake Ontario, the combined falls have the highest flow rate of any waterfall in North America



that has a vertical drop of more than 50 metres (160 ft). During peak daytime tourist hours, more than 168,000 m³ (six million cubic feet) of water goes over the crest of the falls every minute. Horseshoe Falls is the most powerful waterfall in North America, as measured by flow rate.

The falls are 27 kilometres (17 mi) north-northwest of Buffalo, New York, and 121 kilometers (75 mi) south-southeast of Toronto, between the twin cities of Niagara Falls, Ontario, and Niagara Falls, New York. Niagara Falls was formed when glaciers receded at



the end of the Wisconsin glaciation (the last ice age), and water from the newly formed Great Lakes carved a path through the Niagara Escarpment en route to the Atlantic Ocean.

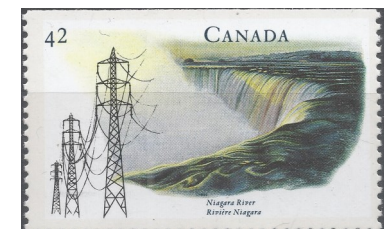


Niagara Falls is famed both for its beauty and as a valuable source of hydroelectric power.



er. Balancing recreational, commercial, and industrial uses has been a challenge for the stewards of the falls since the 19th century. Suggest you watch this video of the Iguazu falls:

<https://www.youtube.com/watch?v=1Qsaz4NFYjc>



Luciano Pavarotti on Stamps, By Editor

Luciano Pavarotti Cavaliere di Gran Croce OMRI (12 October 1935 – 6 September 2007) was an Italian operatic tenor who also crossed over into popular music, eventually becoming one of the most commercially successful



tenors of all time. He made numerous recordings of complete operas and individual arias, gaining worldwide fame for the quality of his tone, and eventually established himself as one of the finest tenors of the 20th century, achieving the honorific title "King of

the High Cs".

As one of the Three Tenors who performed their first concert during the 1990 FIFA World

Cup before a global audience, Pavarotti became well known for his televised concerts and media appearances. From the beginning of his professional career as a tenor in 1961 in Italy



to his final performance of "Nessun dorma" at the 2006 Winter Olympics in Turin, Pavarotti was at his best in bel canto operas, pre-Aida Verdi roles, and Puccini works such as La bohème, Tosca, Turandot and Madama Butterfly. He sold over 100 million records, and the first Three Tenors recording became the best-selling classical album of all time. Pavarotti was also noted for his charity work on behalf of refugees and the Red Cross, amongst others. He passed away on 6 September 2007.



In 2001, Pavarotti received the Nansen Medal from the UN High Commission for Refugees for his efforts raising money on behalf of refugees worldwide. Through benefit concerts and volunteer work, he has raised more than any other individual. Also in 2001, Pavarotti was chosen one of that year's five recipients by the President and First Lady as an honoree for their lifetime achievements in the



arts at the White House, followed by the Kennedy Center; the Kennedy Center Honors. He was surprised by the appearance of Secretary-General of the United Nations and that year's winner of the Nobel Peace Prize, Kofi Annan, who lauded him for his contribution to humankind. Six months prior, Pavarotti had held a large charity concert for Afghan refugees, particularly children in his home town of Modena, Italy.

Other honours he received include



the "Freedom of London Award" and The Red Cross "Award for Services to Humanity", for his work in raising money for that organization, and the 1998 "MusiCares Person of the Year", given to humanitarian heroes by the National Academy of Recording Arts and Sciences. He was a National Patron of Delta Omicron, an international professional music fraternity.

Pavarotti is a 2019 documentary film directed by Ron Howard about Italian operatic tenor Luciano Pavarotti. ©

Lady DI and Pavarotti

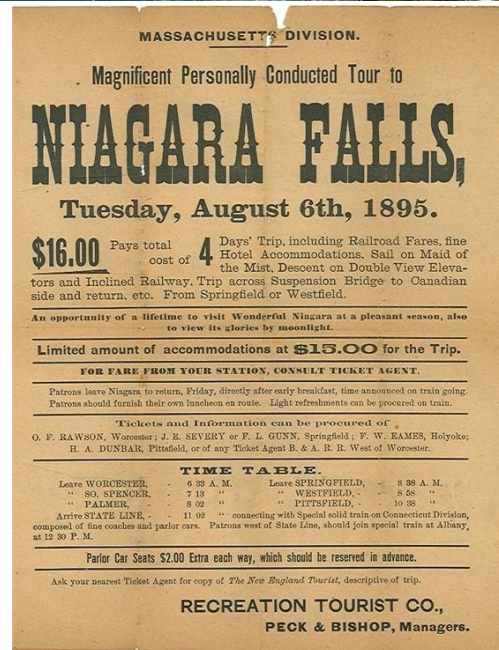


More information on the Niagara falls can be found here:

https://en.wikipedia.org/wiki/Niagara_Falls

Great Britain's only £10 Stamp

Its was issued in 1993 and was called the Britannia Stamp. The Royal Mail released the highest face value postage stamp to date (2020) in the history of the British posts. The official reason for its issue was the postal requirement due to ever increasing postal rates and that space on parcels was now at a premium.



There is another example of face over £10 on an "Airsure" Horizon Postage label.

A Horizon label is an adhesive postage label that is a type of variable value stamp. The labels were introduced in the United Kingdom in 2002 as part of the computerization of the counter services of the post office network of Royal Mail using the Horizon System.

In 2002, the nature of the international priority services was changed, with the insured post scrapped as a separate category. Instead, there were two (initially three) basic services corresponding to the

UPU registered and express services, and an extra fee could be paid for additional insurance cover with any of them. (This was limited to £250 or £500 depending on the destination and service used – much less than the previous maximum of £2200.)

"International Signed For" was essentially the new name for the old registered/International Recorded service, and originally simply offered what the name suggested – a signature on delivery, with no accelerated handling.

"Airsure", and a rebranded version of "Swiftair" with a new logo, were two variants of express service with accelerated handling. The difference was that Airsure packets were tracked electronically all the way to their destination (and could only be sent to countries able to offer this as an option), while Swiftair packets were not and were simply signed for on delivery. Here is an example of an AAX (Airsure) Horizon label for £15.63.



Swiftair S.A. is an airline headquartered in Madrid, Spain. It operates scheduled and charter, passenger and cargo flights in Europe, North Africa and



the Middle East. Its main base is Madrid-Barajas Airport.

The Horizon labels design has recently been changed. This is how it looks now.

Evolution of China Stamps

We will show the first issues of the D-Shanghai Treaty Port, China Empire, Republic, PRC, Foreign Post Offices, Honh Kong, Kiauchau, Macao, Taiwan Republic, Tibet.

Shanghai Treaty Port. The first postage stamps issued in China were those of the Municipality of Shanghai, in 1865. Shown here is the 1 candareen blue.



Empire of China. The Qing dynasty (1644–1911) was the last imperial dynasty in China. Founded by the Manchus, it was the second conquest dynasty to rule the territory of China proper, and roughly doubled the territory controlled by the Ming. The Manchus were formerly known as Jurchens, residing in the northeastern part of the Ming territory outside the Great Wall.

China: 1878, large dragon thin paper 3 Ca. dark red canc. "(CUST) OMS SHANGHAI JAN 10 81".



The Republic of China (ROC) was a sovereign state based in mainland China between 1912 and 1949, prior to the nationalist government's relocation to the island of Taiwan. It was established on 1 January 1912 after the Xinhai Revolution, which overthrew the Qing dynasty, the last imperial dynasty of China. The Republic's first president, Sun Yat-sen, served only briefly before handing over the position to Yuan Shikai, the leader of the Beiyang Army. Sun's party, the Kuomintang (KMT), then led by Song Jiaoren, won the parliamentary election held in December 1912.



Peoples Republic of China (PRC).

China is a country in East Asia. It is the world's most populous country, with a population of around 1.428 billion in 2017. Covering approximately 9.6 million square kilometers (3.7 million mi²), it is the world's third or fourth largest country by area.

Major combat in the Chinese Civil War ended in 1949



with the Communist Party in control of most of mainland China, and the Kuomintang retreating offshore, reducing its territory to only Taiwan, Hainan, and their surrounding islands.

British Post office. The British post offices in China were a system of post offices set up by the United Kingdom in various treaty ports of China in the late 19th and early 20th centuries.

The British established their first treaty ports in China at the conclusion of the First Opium War by the Treaty of Nan-king in 1842. As well as ceding the island of Hong Kong to the United Kingdom in perpetuity, the treaty also established five treaty ports at Shanghai, Canton (Guangzhou), Ningpo (Ningbo), Fuchow (Fuzhou), and Amoy (Xiamen). The following year the Chinese and British signed the Treaty of the Bogue, which added provisions for extraterritoriality and most favoured nation status for the latter country. Subsequent negotiations with the Americans (1843 Treaty of Wanghia) and the French (1844 Treaty of Whampoa) led to further concessions for these nations on the same terms as the British. Cont P . 5



Evolution of China ...

(cont from P 4)

German Post office. The German Empire post offices in China began operation in 1886. Initially, contemporary German Empire definitive postage stamps were used. These are called "forerunners". Many of these are not expensive, and collecting these forerunner issues is very popular with German postmark collectors.



Macao. Following the First Opium War and establishment of Hong Kong, Macau

lost its role as a major port. Firecracker and incense production, as well as tea and tobacco processing, were vital industries in the colony during this time. Portugal was able to capitalize on China's post-war weakness and assert its sovereignty; the Governor of Macau began refusing to pay China annual land rent for the colony in the 1840s, and annexed Taipa and Coloane, in 1851 and 1864 respectively.



Macao 1885 80 Reis grey

Taiwan, officially the Republic of China (ROC), is a country in East

Asia. Neighbouring states include the People's Republic of China (PRC) to the north-west, Japan to the north-east, and the Philippines to the south. The island of Taiwan has an area of 35,808 square kilometers (13,826 sq mi), with mountain ranges dominating the eastern two-thirds and plains in the western third, where its highly urbanised population is concentrated. Taipei is the capital and largest metropolitan area.

Taiwán 1949-50 Dr. Sun Yat-sen of Peiping C.E.P.W. Print, Surcharge 20c on \$44 USED AA7090. ©

