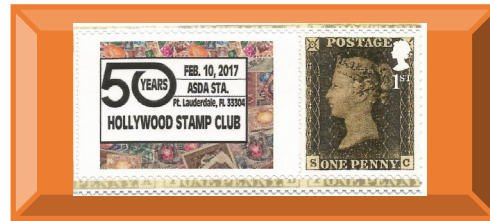


HOLLYWOOD STAMP CLUB
**HOLLYWOOD
PHILATELIST**



**HSC
DIGITAL
EDITION 7
JUNE 20, 2020**



**Enrique
SETARO
HSC
Editor**

US FORD T ON STAMPS

The Ford Model T is an automobile produced by Ford Motor Company from October 1, 1908, to May 26, 1927. It is generally regarded



as the first affordable automobile, which made car travel available to middle-class Americans. The relatively low price was partly the result of Ford's efficient fabri-

cation, including assembly line production instead of individual hand craft-



ing.

The Ford Model T was named the most influential car of the 20th century

in the 1999 Car of the Century competition, ahead of the BMC Mini, Citroën DS, and Volkswagen Type 1. Ford's Model T was successful not only because it provided



inexpensive transportation on a massive scale, but also because the car signified innovation for the rising middle class and became a powerful symbol of the United States age of modernization. With 16.5 million sold, it stood eighth on the top ten list of most sold cars of all time, as of 2012.

Although automobiles had been produced from the 1880s, until the Model T was introduced in 1908, they were mostly scarce, expensive, and often unreliable. Positioned as reliable, easily maintained, mass-market transportation, it was a runaway



success. In a matter of days after the release, 15,000 orders had been placed. The first production Model T was built on August 12, 1908 and left the factory on September 27, 1908, at the Ford Piquette Avenue Plant



in Detroit, Michigan. On May 26, 1927, Henry Ford watched the 15 millionth Model T Ford roll off the assembly line at his factory in Highland Park, Michigan. Henry Ford conceived a series of cars between the founding of the company in 1903 and the introduction of the Model T. Ford named his first car the Model A and proceeded through the alphabet up through the Model T, twenty models in all. Not all the models went into production. ©



RUSSIA CURRENCY STAMPS.

In 1915 a type of stamp-note was ushered in by the Imperialist Russia. These notes were printed to resemble the stamps of the same value then in circulation. The notes were not to be used as stamps, but were designed to take advantage of the well known postage stamps that were then in circulation. This enabled the stamp money to gain acceptance among the general public, and avoid the illegal issuance of local money. Stamp-notes in denominations of 1, 2, 3, 10, 15 and 20 kopeks were issued resembling the Romanov jubilee issue of stamps. The obverses were printed in the same colors as the existing stamps. The reverse contained the Russian eagle and five lines of text in black. The text pointed out that the piece should be accepted in the same manner as silver or copper coins. Although it was forbidden to use these stamp-notes on letters, this was actually done in some instances. These money stamps spread out over the whole of Russia causing some local offices to issue stamps in a similar manner.

1915. October First Set



the back there was the Russian Coat of

Stamps of 10, 15, 20 k. were printed on thin cardboard w/o gum. On

Arms and text. It read "Having circulation on par with silver subsidiary coins". For the 10k. Stamp the Scott catalog shows the values: \$2.50 MNH, postally used \$32.50, on cover \$50. They also exist im-



perforate that command high catalog values in the 100's. It is very rare to find them on cover. Shown here is a registered cover with



the 15k. And two other Russia stamps to pay for the postal rate .



1916. Second Set

Stamps of 1, 2, 3 k. faced values. The back of these stamps is similar to set 1, but with the addition of



"KON 1 KON" for the 1k. stamp.

1917. Third Set. The first two stamps of the second set with a different back printing. Shown here is the back of 2k. stamp.



1917. Fourth Set. The 1 and 2k. are similar to those of the third set. The 3k. Is



like that one of the second set. On the back there is different printing. Shown here is a Nicolas II 15 k coin issued in 1916. What follows is a 500 rubles 1912



bank note with the image of czar Peter I. There are stamps of these sets that have been overprinted with a Liberty Cap on Cross Swords are a private speculation. ©

Consular Reports: Commerce, Manufactures, etc, 1901 German Consulate Buenos Aires

Argentina, 1901 (Oct. 7). **Cover from Buenos Aires**, with German blue wafer Consular label at lower



left, mailed to Hamburg franked by Germany Reichpost 20 pf. Ultramarine, Scott No. 56, tied by oval DEUTSCHE



SEEPOST / LINIE/ HAMBURG-SUDAMERIKA datestamp. Circular SOUTHAMPTON-SHIP LETTER below (Oct. 15) and reverse with Sata Cruz de Tenerife cds and Hamburg arrival cds (16/10). Scarce and appealing cover. ©



burg arrival cds (16/10). Scarce and appealing cover. ©

1937 FIRST FLIGHT SAN FRANCISCO CA TO MACAO, from Liechtenstein

"Vaduz" 7.IV.37 cds ties 90rp



deep green and 1F rose carmine (Scott No. 127 & C15) Zeppelin to card, airmail and registration etiquettes. New York, San Francisco CA, Honolulu HI, Hong Kong and Macao transits on reverse, addressed Basel Switzerland, receiving on front, VF / (AAMC F14-10). ©

COVID-19 ON STAMPS, Coronavirus disease 2019 (COVID-19) is

an infectious disease caused by severe acute respiratory syndrome coronavirus 2 (SARS-CoV-2). It was first identified in December 2019 in Wuhan, China, and since spread globally, resulting in an ongoing pandemic. The first case may be traced back to 17 November 2019. As of 2 June 2020, more than 6.27 million cases have been reported across 188 countries and territories, resulting in more than 375,000 deaths. More than 2.69 million people have recovered.

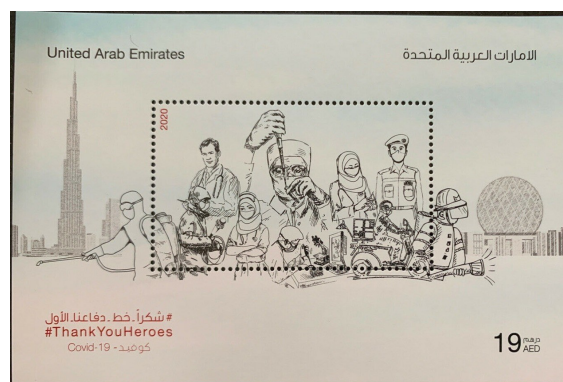
The severity of COVID-19 varies. The disease may take a mild course with few or no symptoms, resembling other common upper respiratory diseases such as the common cold. Mild cases typically recover within two weeks, while those with severe or critical diseases may take three to six weeks to recover.



Lets see how the COVID-19 is reflected in the Philatelic arena.



COVID-19 Cont.





Be and Live Safe

CORONAVIRUS DISEASE 2019 (COVID-19)

Patients with COVID-19 have reportedly had mild to severe respiratory illness. Symptoms can include

- Fever
- Cough
- Shortness of breath

*Symptoms may appear 2-14 days after exposure.

Seek medical advice if you develop symptoms, and have been in close contact with a person known to have COVID-19 or if you live in or have recently been in an area with ongoing spread of COVID-19.

cdc.gov/COVID19-symptoms

314705-B March 21, 2020 4:58 PM

PREPARE FOR A HURRICANE

KNOW YOUR AREA, MAKE A PLAN!
Include more than one evacuation route.

PREPARE AN EMERGENCY KIT!
Prepare a kit with supplies for at least 10 days.

PREPARE YOUR HOME!
Install shutters, clean gutters and drains, trim trees and shrubs.

Ready. FEMA